

---

**WESTERN AREAS LTD**



**SPOTTED QUOLL OPEN PIT NICKEL MINE  
MINISTERIAL STATEMENT 808  
COMPLIANCE ASSESSMENT REPORT**



**PREPARED BY:  
WESTERN AREAS LTD**

**PREPARED FOR:  
OFFICE OF THE ENVIRONMENTAL PROTECTION AUTHORITY  
COMPLIANCE BRANCH**

**DATE:  
SEPTEMBER 2016**

---


WESTERN AREAS LTD

FORRESTANIA NICKEL OPERATIONS - SPOTTED QUOLL PROJECT

MINISTERIAL STATEMENT 808

COMPLIANCE ASSESSMENT REPORT CERTIFICATION

I declare that the information in this Compliance Assessment Report for Ministerial Statement 808 is correct and not false or misleading in a material particular.

Signature: 

Name (printed): **DANIEL LOUGHER**

Position: *Managing Director & CEO*

Date: *23 / 8 / 2016*

Seal (if signing under seal):

---

## 1. EXECUTIVE SUMMARY

This Compliance Assessment Report (CAR) outlines the current status of compliance of the Western Areas Ltd (Western Areas) owned Spotted Quoll proposal with the proposal implementation conditions set out in Ministerial Statement 808.

The Spotted Quoll open pit mine ceased production on the 14th February 2012. At the time of submission of this CAR, underground mining continues and will continue for a further 6 to 7 years (approximately). Underground mining operations largely utilise infrastructure that was established as a part of the open pit component. Therefore apart from some available sections of the Spotted Quoll waste dump the majority of rehabilitation of the site will not commence until cessation of mining, sometime between 2022 and 2023.

Rehabilitation has commenced on a significant portion of the Spotted Quoll waste dump. Rehabilitation monitoring was undertaken for the first time in spring 2014 and will be replicated in future to monitor rehabilitation performance and trends.

For the reporting period (i.e. 1st July 2015– 30th June 2016) there were no non-compliances with the conditions of Statement 808.

The CAR has been signed by the Managing Director of Western Areas.

---

## TABLE OF CONTENTS

1.	Executive Summary .....	3
2.	Introduction .....	5
3.	Purpose and Scope .....	5
4.	Statement 808 Compliance .....	6
4.1.	Condition 1 .....	6
4.2.	Condition 2 .....	6
4.3.	Condition 3 .....	7
4.4.	Condition 4 .....	7
4.5.	Condition 5 .....	9
4.6.	Condition 6 .....	10
4.7.	Condition 7 .....	11
4.8.	Condition 8 .....	12
5.	Audit Table Summary .....	13
6.	Conclusion .....	17
7.	Figures .....	18
7.1.	Figure 1 – Location of Forrestania Nickel Project in Western Australia .....	18
7.2.	Figure 2 – Spotted Quoll project – general site layout plan .....	19
8.	Appendices .....	20
8.1.	Appendix 1 - Eucalyptus steedmanii monitoring summary report .....	20

---

## 2. INTRODUCTION

The Forrestania Nickel Operations (FNO) are situated approximately 160 kilometres south of Southern Cross and 80 kilometres east of Hyden in the Shire of Kondinin. This is a mining development owned and operated by Western Areas Ltd (Western Areas) in an area with a long history of mining and exploration activity. Figure 1 shows the location of the FNO within Western Australia.

Western Areas currently operate the Flying Fox underground nickel mine, Cosmic Boy accommodation camp and the Cosmic Boy nickel concentrator. The previously approved Digger Rocks project sits on care and maintenance. Exploration activities continue throughout the Forrestania area.

On the 17th of September 2009 the Environmental Impact Assessment report (1334) for the Spotted Quoll open pit mine (the project) , released by the Western Australian Environmental Protection Authority (EPA) was approved and signed off by the Western Australian Minister for the Environment (Ministerial Statement # 808, henceforth known as Statement 808).

The Western Australian Minister for the Environment signed Ministerial Statement 882 to amend conditions imposed on Statement 808 on 2nd December 2011.

A Works Approval (WA 4499/2008/1) for the construction of dewatering infrastructure including dewatering bores and a pipeline system including a settling pond was granted by the Department of Environment and Conservation (DEC) on 24th September 2009 (ref: DEC9635).

On the 7th of October 2009 the project was signed off (Reg# 22286) by the Environmental Division of the Department of Mines and Petroleum (DMP) and ground disturbance activities commenced on the 9th of October 2009.

The Department of Water (DoW) Water Abstraction Licence for Spotted Quoll (GWL170112) was granted on the 19th of November 2009.

An amendment was made to the Flying Fox Prescribed Premises Licence (L8041/1991/3) on the 4th of February 2010 to include the dewatering activities associated with the Spotted Quoll open pit mine. This license has since been renewed and amalgamated all site prescribed premises licenses to form a contiguous boundary and operate in an integrated entity under L 8041/1990/5.

Underground mining continues at the Spotted Quoll project and this is likely to continue for a further 6 to 7 years. Underground mining operations largely utilise infrastructure that was established as a part of the open pit component. Therefore apart from some available sections of the Spotted Quoll waste dump the majority of rehabilitation of the site will not commence until cessation of mining sometime between 2022 and 2023.

Rehabilitation has commenced on a significant portion of the Spotted Quoll waste dump. Rehabilitation monitoring was undertaken for the first time in spring 2014 and will be replicated in future to monitor rehabilitation performance and trends.

Figure 2 shows the general layout of the Spotted Quoll project.

## 3. PURPOSE AND SCOPE

Statement 808 contains implementation conditions endorsed by the Western Australian Minister for the Environment, by which the project can be implemented. Condition 4 of Statement 808 provides details of Compliance Reporting commitments.

### Condition 4-1 states:

The proponent shall prepare and maintain a compliance assessment plan to the satisfaction of the Chief Executive Officer of the Department of Environment and Conservation;

---

**Condition 4-6 states:**

The proponent shall submit a compliance assessment report annually from the date of issue of this Implementation Statement addressing the previous twelve month period or other period as agreed by the Chief Executive Officer of the Department of Environment and Conservation. The compliance assessment report shall:

- be endorsed by the proponent's Managing Director or a person, approved in writing by the Department of Environment and Conservation, delegated to sign on the Managing Director's behalf
- include a statement as to whether the proponent has complied with the conditions
- identify all potential non-compliances and describe corrective and preventative actions taken
- be made publicly available in accordance with the approved compliance assessment plan
- indicate any proposed changes to the compliance assessment plan required by condition 4-1

This document serves to meet the requirements of Condition 4-6 of Statement 808 and shows compliance with the Compliance Assessment Plan (CAP)

#### **4. STATEMENT 808 COMPLIANCE**

Statement 808 lists 8 implementation conditions for the project. This section of the report compares these conditions with the actions that have been undertaken during project implementation to achieve these so that a measure of compliance can be made.

It should be noted that because of the recent establishment of the Office of the Environmental Protection Authority, reference to the Chief Executive Officer (CEO) of the Department of Environment and Conservation in Statement 808 now means the CEO of the Office of the Environmental Protection Authority (OEPA); and The Department of Environment and Conservation means the OEPA.

The reporting period for this CAR is from the 1st July 2015 to the 30th of June 2016 with the report to be submitted on or before the 16th of September 2016.

##### **4.1. CONDITION 1**

###### **Statement**

Condition 1 of Statement 808 relates to Proposal Implementation and states:

The proponent shall implement the proposal as documented and described in schedule 1 of this statement subject to the conditions and procedures of this statement.

###### **Compliance**

Condition 1-1

This document serves to confirm that the proposal has been implemented subject to the conditions and procedures of Statement 808 hence compliance with Condition 1 is met for the reporting period.

##### **4.2. CONDITION 2**

###### **Statement**

Condition 2 of Statement 808 relates to the Proponent Nomination and Contact details and comprises 2 parts as follows:

---

Condition 2-1: The proponent for the time being nominated by the Minister for Environment under sections 38(6) or 38(7) of the Environmental Protection Act 1986 is responsible for the implementation of the proposal;

Condition 2-2: The proponent shall notify the Chief Executive Officer of the Department of Environment and Conservation of any change of the name and address of the proponent for the serving of notices or other correspondence within 30 days of such change.

#### Compliance

##### Condition 2-1

Western Areas remains the proponent responsible for the implementation of the proposal hence compliance with Condition 2-1 is met for the reporting period.

##### Condition 2-2

The business name of Western Areas remained as "Western Areas Ltd" during the reporting period. Compliance is met with Condition 2-2 for the reporting period.

#### **4.3. CONDITION 3**

##### Statement

Condition 3 of Statement 808 relates to the Time Limit of Authorisation for the proposal and comprises 2 parts as follows:

Condition 3-1: The authorisation to implement the proposal provided for in this statement shall lapse and be void five years after the date of this statement if the proposal to which this statement relates is not substantially commenced;

Condition 3-2: The proponent shall provide the Chief Executive Officer of the Department of Environment and Conservation with written evidence which demonstrates that the proposal has been substantially commenced on or before the expiration of five years from the date of this statement.

##### Compliance

##### Condition 3-1

Condition 3-1 is noted. The project was substantially commenced on the 9th of October 2009, hence Condition 3-1 has been met and is complete.

##### Condition 3-2

A letter notifying the OEPA of substantial commencement was provided on the 17th September 2010. Hence Condition 3-2 has been met and is complete.

#### **4.4. CONDITION 4**

##### Statement

Condition 4 of Statement 808 relates to Compliance reporting and consists of 6 parts as follows:

---

Condition 4-1: The proponent shall prepare and maintain a compliance assessment plan to the satisfaction of the Chief Executive Officer of the Department of Environment and Conservation;

Condition 4-2: The proponent shall submit to the Chief Executive Officer of the Department of Environment and Conservation, the compliance assessment plan required by condition 4-1 at least 6 months prior to the first compliance report required by condition 4-6. The compliance assessment plan shall indicate:

- the frequency of compliance reporting
- the approach and timing of compliance assessments
- the retention of compliance assessments
- reporting of potential non-compliances and corrective actions taken
- the table of contents of compliance reports
- public availability of compliance reports

Condition 4-3: The proponent shall assess compliance with conditions in accordance with the compliance assessment plan required by condition 4-1.

Condition 4-4: The proponent shall retain reports of all compliance assessments described in the compliance assessment plan required by condition 4-1 and shall make those reports available when requested by the Chief Executive Officer of the Department of Environment and Conservation.

Condition 4-5: The proponent shall advise the Chief Executive Officer of the Department of Environment and Conservation of any potential non-compliance within two business days of that non-compliance being known.

Condition 4-6: The proponent shall submit a compliance assessment report annually from the date of issue of this Implementation Statement addressing the previous twelve month period or other period as agreed by the Chief Executive Officer of the Department of Environment and Conservation. The compliance assessment report shall:

- be endorsed by the proponents Managing Director or a person, approved in writing by the Department of Environment and Conservation, delegated to sign on the Managing Director's behalf
- include a statement as to whether the proponent has complied with the conditions
- identify all potential non-compliances and describe corrective and preventative actions taken
- be made publicly available in accordance with the approved compliance assessment plan
- indicate any proposed changes to the compliance assessment plan required by condition 4-1

## Compliance

### Condition 4-1

A Compliance Assessment Plan (CAP) was prepared and is being maintained in accordance with Condition 4-1. The CAP was received by the OEPA and the Proposal Implementation Monitoring Branch (PIMB) provided correspondence dated the 12th of May 2010 that the compliance monitoring database had been updated to reflect their receipt of the CAP, indicating satisfaction with its content. A letter dated 12th October 2010 was provided advising WSA that the revised CAP submitted on the 24th September 2010 meets the requirements for Condition 4-1 and 4-2 of Ministerial Statement 808.



---

#### Condition 4-2

On the 23rd of November 2009, the then Proposal Implementation Management Section of the DEC (PIMS; Claire Adams) advised via email that the CAP required by Condition 4-1 should be submitted by the 17th of March 2010 in order to meet Condition 4-2. The Draft CAP was submitted to the OEPA on the 10th of March 2010. Hence compliance has been met for Condition 4-2. A final approved copy of the CAP was provided to the newly created Project Implementation Monitoring Branch (PIMB) on the 5th May 2010. A letter dated 12th October 2010 was provided advising WSA that the revised CAP submitted on the 24th September 2010 meets the requirements for Condition 4-1 and 4-2 of Ministerial Statement 808.

#### Condition 4-3

This Compliance Assessment Report (CAR) provides an assessment of conditions in accordance with the CAP. Hence compliance has been met for Condition 4-3.

#### Condition 4-4

Appendices 1 and 2 of this CAR provide the summary reports that have been prepared for the reporting period as a result of implementation of Conditions 6-3 and 7-1.

#### Condition 4-5

There were no known non-compliances for the reporting period hence compliance has been met for Condition 4-5.

#### Condition 4-6

Statement 808 was issued on the 17th of September 2009. Therefore in line with Condition 4-6 and as per Section 2 of the CAP, the CAR is due for submission by (i.e. on or before) the 16th of September 2010 and annually thereafter.

The CAR for the reporting period was submitted on or before the 16th of September 2014. Hence compliance has been met for this condition for the reporting period.

This CAR addresses points 1, 2, 3, 4 and 5 under Condition 4-6. The CAR will be placed on the company website within 2 weeks of submission of the CAR to the CEO of the OEPA and the OEPA will be notified once this has been completed.

### 4.5. CONDITION 5

#### Statement

Condition 5 of Statement 808 relates to Performance Review and Reporting as follows:

Condition 5-1: The proponent shall submit to the Chief Executive Officer of the Department of Environment and Conservation, a Performance Review Report at the conclusion of the first year after the start of implementation and then annually, which addresses:

- the major environmental risks and impacts; the performance objectives, standards and criteria related to these; the success of risk reduction/impact mitigation measures and results of monitoring related to management of the major risks and impacts

- 
- the level of progress in the achievement of sound environmental performance, including industry benchmarking, and the use of best available technology where practicable
  - improvements gained in environmental management which could be applied to this and other similar projects

#### Compliance

##### Condition 5-1

The Performance Review Report (PRR) required by Condition 5-1 was submitted on the 10th of October 2013. Compliance with this condition has been met for the reporting period. The PRR for the 2015 - 2016 reporting period will be submitted on the 8th October 2016.

#### **4.6. CONDITION 6**

Condition 6 of Statement 808 relates to Flora and Vegetation and consists of 6 parts as follows:

##### Statement

Condition 6-1: The proponent shall not cause the loss of the Declared Rare Flora *Eucalyptus steedmanii* from the implementation of the proposal.

Condition 6-2: Prior to ground disturbing activities, the proponent shall undertake baseline monitoring of the health and abundance of the Declared Rare Flora *Eucalyptus steedmanii* populations 2, 3a, 3b, 7 and population 1 (including individuals in close proximity to the haul road and the population fragment to the west of the haul road) identified in Figure 3, schedule 1.

Condition 6-3: The proponent shall monitor impacts on the health and abundance of the Declared Rare Flora *Eucalyptus steedmanii* populations as identified in condition 6-2, from activities undertaken in implementing the proposal. This monitoring shall be carried out to the satisfaction of the Chief Executive Officer of the Department of Environment and Conservation.

Condition 6-4: The proponent shall submit annually the results of monitoring required by condition 6-3 to the Chief Executive Officer of the Department of Environment and Conservation.

Condition 6-5: In the event that monitoring required by condition 6-3 indicates a decline in the health or abundance of Declared Rare Flora *Eucalyptus steedmanii* outside the areas to be cleared:

- the proponent shall report such findings to the Chief Executive Officer of the Department of Environment and Conservation within 21 days of the decline being identified
- provide evidence which allows determination of the cause of the decline
- if determined by Chief Executive Officer of the Department of Environment and Conservation to be a result of activities undertaken in implementing the proposal, the proponent shall submit actions to be taken to remediate the decline to the Chief Executive Officer
- the actions to remediate the decline of Declared Rare Flora shall be undertaken upon approval of the Chief Executive Officer of the Department of Environment and Conservation

---

Condition 6-6: The proponent shall make the monitoring reports required by condition 6-5 publicly available in a manner approved by the Chief Executive Officer of the Department of Environment and Conservation

#### Compliance

##### Condition 6-1

As at the 30th of June 2015, there has been no recorded loss of the DRF *Eucalyptus steedmanii* through implementation of the project. Hence compliance with Condition 6-1 has been met for the reporting period.

##### Condition 6-2

Baseline monitoring of *Eucalyptus steedmanii* populations 2, 3a, 3b, 7 and population 1 was undertaken in September 2009. The baseline report was supplied to the PIMS in September 2009 prior to ground disturbance activities taking place in October. Hence compliance with this condition has been met.

##### Condition 6-3

Monitoring of impacts to the health and abundance of *Eucalyptus steedmanii* has been undertaken in line with the OEPA approved Steedman's Gum Conservation Management Plan (CMP). The original CMP was updated in April 2014 and the update approved by the OEPA on the 20th May 2014. During the reporting period there was a transition from monitoring against the original CMP schedule to the monitoring schedule of the updated CMP. Results since the new monitoring schedule was implemented are summarised in the compliance assessment summary report included as Appendix 1 of this CAR. Hence compliance with Condition 6-3 is met for the reporting period.

##### Condition 6-4

Monitoring results to the 30th of June 2016 for *Eucalyptus steedmanii* are included in the compliance assessment summary report included as Appendix 1 of this CAR. Hence compliance with Condition 6-4 for the reporting period is met.

##### Condition 6-5

As at the 30th of June 2014 the monitoring required by Condition 6-3 has not indicated a decline in the health or abundance of *Eucalyptus steedmanii*. Hence the requirements of Condition 6-5 are not triggered and compliance is not applicable for the reporting period.

##### Condition 6-6

No monitoring reports were required to be produced under the requirements of Condition 6-5 and hence compliance with Condition 6-6 is not applicable for the reporting period.

#### **4.7. CONDITION 7**

Condition 7 of Statement 808 relates to fauna and is as follows:

---

### Statement

Condition 7-1: The proponent shall implement measures identified in Chapter 6.3 of the Environmental Protection Statement for the Proposed Spotted Quoll Mine, prepared by Coffey Environments Pty Ltd, Perth, Western Australia (July 2009) to prevent adverse impacts to Malleefowl along the haul road.

### Compliance

WSA has implemented measures identified in Chapter 6.3 for the prevention of adverse impacts to Malleefowl along the Spotted Quoll to Flying Fox haul road in previous reporting periods. An ongoing Malleefowl mound monitoring program has been established and educational awareness is ongoing through general environmental inductions at the FNO.

## **4.8. CONDITION 8**

Condition 8 of Statement 808 relates to Mine Closure and Rehabilitation and consists of 2 parts as 8-3 was deleted under Section 46(8) of the Environmental Protection Act 1986. Condition 8-3 has been deleted and Condition 8-2 was subsequently changed to reflect the wording as described below:

### Statement

Condition 8-1: Prior to the commencement of ground-disturbing activities, the proponent shall conduct surveys of the proposal area to collect baseline information on the following:

- pre-mining soil profiles
- groundwater levels
- surface water flows
- vegetation complexes
- landscape and landforms
- material characterisation

Condition 8-2: The proponent shall submit a Rehabilitation and Mine Closure Plan acceptable to the Chief Executive Officer of the Department of Environment and Conservation and the Director General of the Department of Mines and Petroleum with the advice of other agencies as appropriate within 12 months of the commencement of ground disturbing activities.

The Rehabilitation and Mine Closure Plan shall provide for specific outcomes for:

- Landform design and material characterisation
- Rehabilitation completion criteria consistent with Environmental Protection Authority Guidance Statement No.6\* to provide a self sustaining, functional ecosystem comprising, native vegetation of local provenance species
- Progressive rehabilitation timelines and monitoring against key performance indicators
- Annual reporting procedures
- Procedures to review and revise the Rehabilitation and Mine Closure Plan
- Measures for preventing groundwater contamination outside the final pit void
- In the event that a pit lake forms, management measures for ensuring the site is inaccessible to fauna identified as being at risk of impact and for protecting the surrounding native vegetation from potential adverse impacts. The management measures are to be practicable and in accordance with best practice mine closure safety and environmental standards

\* Guidance for the Assessment of Environmental Factors: Rehabilitation of Terrestrial Ecosystems: No 6, Environmental Protection Authority, 2006.

---

## Compliance

### Condition 8-1

Baseline data meeting the requirements of Condition 8-1 was supplied to PIMS in September 2009 prior to ground disturbance activities commencing. Hence compliance with Condition 8-1 has been met and is now complete.

### Condition 8-2

The Rehabilitation and Mine Closure Plan (RMCP) was submitted on the 26th July 2010. Comments from the DMP were received on the 14th October 2010. Comments from the OEPA were received on the 28th July 2011. Further advice from the OEPA on the 22nd August 2011 was that the revised RMCP should be submitted once the Section 46 application (submitted on 3rd December 2010) to alter Condition 8-2 and 8-3 of Ministerial Statement 808 has been resolved which has occurred. The latest revision of the RMCP was submitted to the OEPA and the DMP in September 2013 and this covered all sites across FNO including Spotted Quoll. OEPA accepted the plan on the 02/12/2013. DMP accepted the plan on the 06/12/2013 with the next revision due for submission in September 2016. The RMCP has been developed to meet all points of condition 8-2.

To date some progressive rehabilitation activities have been undertaken across FNO in line with the RMCP. This includes rehabilitation undertaken over a significant portion of the Spotted Quoll waste dump. The first round of rehabilitation monitoring was undertaken in spring 2014 and will be replicated in future to monitor rehabilitation performance and trends.

Compliance has been met for Condition 8-2 for the reporting period.

## **5. AUDIT TABLE SUMMARY**

Table 1 summarises compliance with the implementation conditions for the reporting period.

Table 1: Summary statement of project compliance with implementation conditions

Number	Subject	Compliance Status
808:M1.1	The proponent shall implement the proposal as documented and described in schedule 1 of this statement subject to the conditions and procedures of this statement.	Yes.
808:M2.1	The proponent for the time being nominated by the Minister for Environment under sections 38(6) or 38(7) of the Environmental Protection Act 1986 is responsible for the implementation of the proposal.	Yes.
808:M2.2	The proponent shall notify the Chief Executive Officer of the Department of Environment and Conservation of any change of the name and address of the proponent for the serving of notices or other correspondence within 30 days of such change.	Yes.
808:M3.1	The authorisation to implement the proposal provided for in this statement shall lapse and be void five years after the date of this statement if the proposal to which this statement relates is not substantially commenced.	Yes. Condition complete.
808:M3.2	The proponent shall provide the Chief Executive Officer of the Department of Environment and Conservation with written evidence which	Yes. Condition complete.

	demonstrates that the proposal has substantially commenced on or before the expiration of five years from the date of this statement.	
808:M4.1	The proponent shall prepare and maintain a compliance assessment plan to the satisfaction of the Chief Executive Officer of the Department of Environment and Conservation.	Yes, revised CAP submitted on 24/09/10.
808:M4.2	The proponent shall submit to the Chief Executive Officer of the Department of Environment and Conservation, the compliance assessment plan required by condition 4-1 at least 6 months prior to the first compliance report required by condition 4-6. The compliance assessment plan shall indicate: <ul style="list-style-type: none"> <li>• the frequency of compliance reporting;</li> <li>• the approach and timing of compliance assessments;</li> <li>• the retention of compliance assessments;</li> <li>• reporting of potential non-compliances and corrective actions taken;</li> <li>• the table of contents of compliance reports; and</li> <li>• public availability of compliance reports.</li> </ul>	Yes. Condition complete.
808:M4.3	The proponent shall assess compliance with conditions in accordance with the compliance assessment plan required by condition 4-1.	Yes.
808:M4.4	The proponent shall retain reports of all compliance assessments described in the compliance assessment plan required by condition 4-1 and shall make those reports available when requested by the Chief Executive Officer of the Department of Environment and Conservation.	Yes.
808:M4.5	The proponent shall advise the Chief Executive Officer of the Department of Environment and Conservation of any potential non-compliance within two business days of that non-compliance being known.	Yes.
808:M4.6	Condition 4-6: The proponent shall submit a compliance assessment report annually from the date of issue of this Implementation Statement addressing the previous twelve month period or other period as agreed by the Chief Executive Officer of the Department of Environment and Conservation. The compliance assessment report shall: <ul style="list-style-type: none"> <li>• be endorsed by the proponents Managing Director or a person, approved in writing by the Department of Environment and Conservation, delegated to sign on the Managing Director's behalf;</li> <li>• include a statement as to whether the</li> </ul>	Yes

	<p>proponent has complied with the conditions;</p> <ul style="list-style-type: none"> <li>• identify all potential non-compliances and describe corrective and preventative actions taken;</li> <li>• be made publicly available in accordance with the approved compliance assessment plan;</li> <li>• indicate any proposed changes to the compliance assessment plan required by condition 4-1.</li> </ul>	
808:M5.1	The proponent shall submit to the Chief Executive Officer of the Department of Environment and Conservation, a Performance Review Report at the conclusion of the first year after the start of implementation and then annually.	Yes, submitted on 10/10/13. The PRR for the 2015 - 2016 reporting period will be submitted in October 2016.
808:M6.1	The proponent shall not cause the loss of the Declared Rare Flora <i>Eucalyptus steedmanii</i> from the implementation of the proposal.	Yes.
808:M6.2	Prior to ground disturbing activities, the proponent shall undertake baseline monitoring of the health and abundance of the Declared Rare Flora <i>Eucalyptus steedmanii</i> populations 2, 3a, 3b, 7 and population 1 (including individuals in close proximity to the haul road and the population fragment to the west of the haul road) identified in Figure 3, schedule 1.	Yes. Condition complete.
808:M6.3	The proponent shall monitor impacts on the health and abundance of the Declared Rare Flora <i>Eucalyptus steedmanii</i> populations and individuals as identified in condition 6-2, from activities undertaken in implementing the proposal. This monitoring shall be carried out to the satisfaction of the Chief Executive Officer of the Department of Environment and Conservation.	Yes.
808:M6.4	The proponent shall submit annually the results of monitoring required by condition 6-3 to the Chief Executive Officer of the Department of Environment and Conservation.	Yes.
808:M6.5	<p>In the event that monitoring required by condition 6-3 indicates a decline in the health or abundance of Declared Rare Flora <i>Eucalyptus steedmanii</i> outside the areas to be cleared:</p> <ul style="list-style-type: none"> <li>• the proponent shall report such findings to the Chief Executive Officer of the Department of Environment and Conservation within 21 days of the decline being identified;</li> <li>• provide evidence which allows determination of the cause of the decline;</li> </ul>	Not applicable for reporting period.

	<ul style="list-style-type: none"> <li>• if determined by Chief Executive Officer of the Department of Environment and Conservation to be a result of activities undertaken in implementing the proposal, the proponent shall submit actions to be taken to remediate the decline to the Chief Executive Officer; and</li> <li>• the actions to remediate the decline of Declared Rare Flora shall be undertaken upon approval of the Chief Executive Officer of the Department of Environment and Conservation.</li> </ul>	
808:M6.6	The proponent shall make the monitoring reports required by condition 6-5 publicly available in a manner approved by the Chief Executive Officer of the Department of Environment and Conservation.	Not applicable for reporting period.
808:M7.1	The proponent shall implement measures identified in Chapter 6.3 of the Environmental Protection Statement for the Proposed Spotted Quoll Mine, prepared by Coffey Environments Pty Ltd, Perth, Western Australia (July 2009) to prevent adverse impacts to Malleefowl along the haul road.	Yes.
808:M8.1	<p>Prior to the commencement of ground-disturbing activities, the proponent shall conduct surveys of the proposal area to collect baseline information on the following:</p> <ul style="list-style-type: none"> <li>• pre-mining soil profiles;</li> <li>• groundwater levels;</li> <li>• surface water flows;</li> <li>• vegetation complexes;</li> <li>• landscape and landforms; and</li> <li>• material characterisation.</li> </ul>	Yes. Condition complete.
808:M8.2	<p>The proponent shall submit a Rehabilitation and Mine Closure Plan (RMCP) acceptable to the Chief Executive Officer of the Department of Environment and Conservation and the Director General of the Department of Mines and Petroleum with the advice of other agencies as appropriate within 12 months of the commencement of ground disturbing activities.</p> <p>The Rehabilitation and Mine Closure Plan shall provide for specific outcomes for:</p> <p>landform design and material characterisation; rehabilitation completion criteria consistent with Environmental Protection Authority Guidance Statement No.6* to provide a self sustaining, functional ecosystem comprising, native vegetation of local provenance species;</p>	Yes. The current RMCP was accepted by both the OEPA and the DMP in December 2013.



	<p>progressive rehabilitation timelines and monitoring against key performance indicators; annual reporting procedures; procedures to review and revise the Rehabilitation and Mine Closure Plan; Measures for preventing groundwater contamination outside the final pit void; and In the event that a pit lake forms, management measures for ensuring the site is inaccessible to fauna identified as being at risk of impact and for protecting the surrounding native vegetation from potential adverse impacts. The management measures are to be practicable and in accordance with best practice mine closure safety and environmental standards.</p> <p>* Guidance for the Assessment of Environmental Factors: Rehabilitation of Terrestrial Ecosystems: No 6, Environmental Protection Authority, 2006.</p>	
808:M8.3	DELETED (s46)	Not applicable for reporting period.

The Audit Table for statement 808 should be updated to reflect the current status of compliance with the conditions.

## 6. CONCLUSION

This CAR outlines the current status of compliance of the Western Areas NL owned Spotted Quoll proposal with the proposal implementation conditions set out in Ministerial Statement 808 and has been signed off by the Managing Director of Western Areas Ltd.

For the reporting period (i.e. 1st July 2015 – 30th June 2016) there were no non-compliances with the conditions of Statement 808.

If you have any queries regarding this CAR please do not hesitate to contact the undersigned.



Bryan Williams  
Group Environmental Manager  
Western Areas Ltd  
Ph: 9334 7777  
Email: [bwilliams@westernareas.com.au](mailto:bwilliams@westernareas.com.au)

## 7. FIGURES

### 7.1. FIGURE 1 – LOCATION OF FORRESTANIA NICKEL PROJECT IN WESTERN AUSTRALIA



Figure 1: Location Map of the Forrestania Nickel Operation



7.2. FIGURE 2 – SPOTTED QUOLL PROJECT – GENERAL SITE LAYOUT PLAN

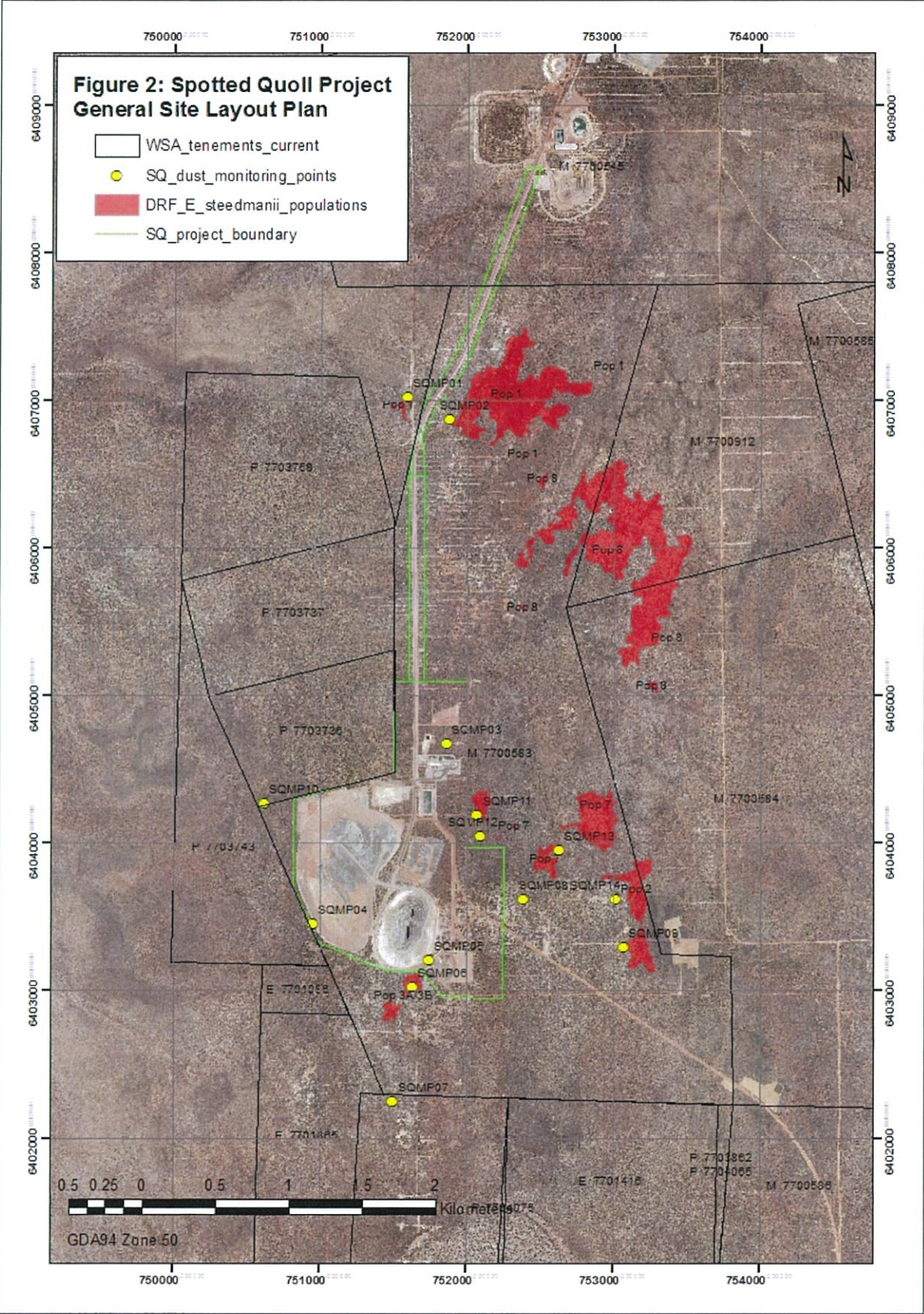


Figure 2: Spotted Quoll Project General Site Layout Plan

---

## 8. APPENDICES

### 8.1. APPENDIX 1 - EUCALYPTUS STEEDMANII MONITORING SUMMARY REPORT

#### Purpose

This report has been produced to satisfy condition 6-4 of Ministerial Statement 808, Report 1334. The aim of this report is to present the results of health and abundance monitoring of the Declared Rare Flora *Eucalyptus steedmanii* populations as identified in condition 6-2.

#### Summary

*Eucalyptus steedmanii* monitoring for the reporting period has shown that there has been no visible detrimental impacts to the health of any of the *Eucalyptus steedmanii* populations that occur in the vicinity of the Spotted Quoll project. No obvious change in populations has been observed during this reporting period. Visual records have been kept via photographic monitoring of quarterly and annual transects.

#### Population 1

Population 1 is located in close proximity to the new haul road between Spotted Quoll mine and the Flying Fox mine. Photo monitoring and transect monitoring is undertaken on a quarterly basis for this population.

No decline in the health assessment of the plants was observed for the reporting period. Some plants are affected by the parasitic creeper *Cassytha melantha* (Large Dodder Laurel), however there has been no indication that the health of the affected plants has deteriorated over the monitoring period. The reproductive maturity of the population has remained stable throughout the monitoring period. Table 1 and Figure 1 illustrate the monitoring results over the period.



Table 1: Population 1 Average Quarterly Summary Results

Date	Apr-15	Jul-15	Oct-15	Jan-16	Apr-16	Jul-16
Dust rating	1.0	1.0	1.0	1.0	1.0	1.0
Fruit	1.3	1.2	1.4	1.4	1.5	1.6
Fruit mature	0.6	0.5	0.6	0.7	0.8	0.7
Fruit immature	0.8	0.7	0.8	0.7	0.7	0.9
Density	5.2	5.4	4.9	4.8	5.8	4.7
Branches	4.9	4.9	4.9	4.8	4.8	4.8
Epicormic	3.0	2.9	2.9	2.9	2.9	2.9
Grimes rating total	13.1	13.2	12.7	12.5	13.5	12.4

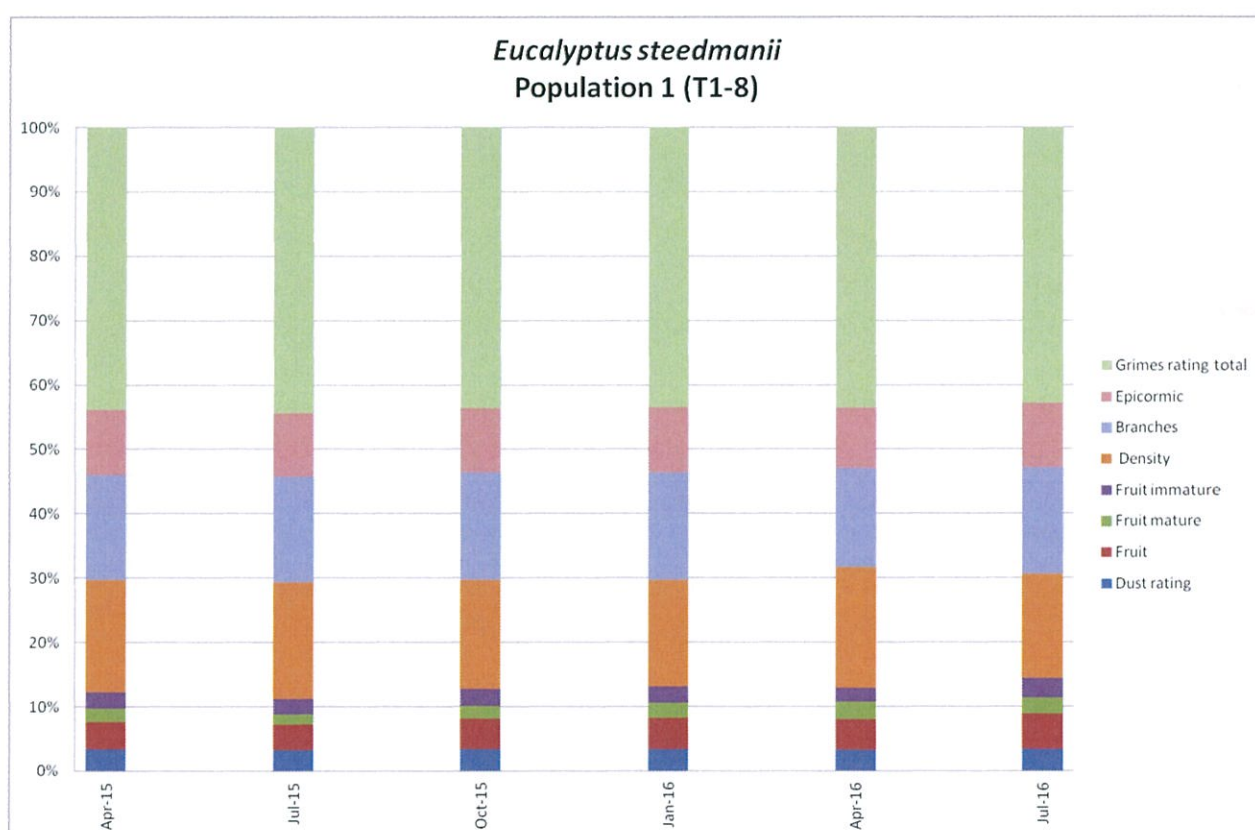


Figure 3: Population 1 Quarterly Health and Reproductive Maturity Graph

## Population 2

Population 2 is located some 1.8km east of the Spotted Quoll mine. Quarterly transect monitoring is undertaken for this population. A slight decline in the total grimes rating assessment was observed during the reporting period. This has been attributed to some dead branches and epicormic growth being observed on some trees. Despite this, total density and fruit has remained stable. Western Areas will continue to monitor this population closely in the next reporting period. Table 2 and Figure 2 illustrate the monitoring results over the period.

Table 2: Population 2 Average Quarterly Summary Results

Date	Apr-15	Jul-15	Oct-15	Jan-16	Apr-16	Jul-16
Dust rating	1.0	1.0	1.0	1.0	1.0	1.0
Fruit	1.5	2.0	1.9	1.9	2.0	2.0
Fruit mature	0.6	1.6	1.8	1.7	1.7	1.7
Fruit immature	1.0	1.0	0.2	0.3	0.3	0.4
Density	4.8	5.5	5.5	5.4	5.5	5.5
Branches	4.9	4.8	4.3	4.0	4.1	4.2
Epicormic	3.0	2.9	2.9	2.9	2.9	2.9
Grimes rating total	12.7	13.1	12.7	11.3	11.1	11.5

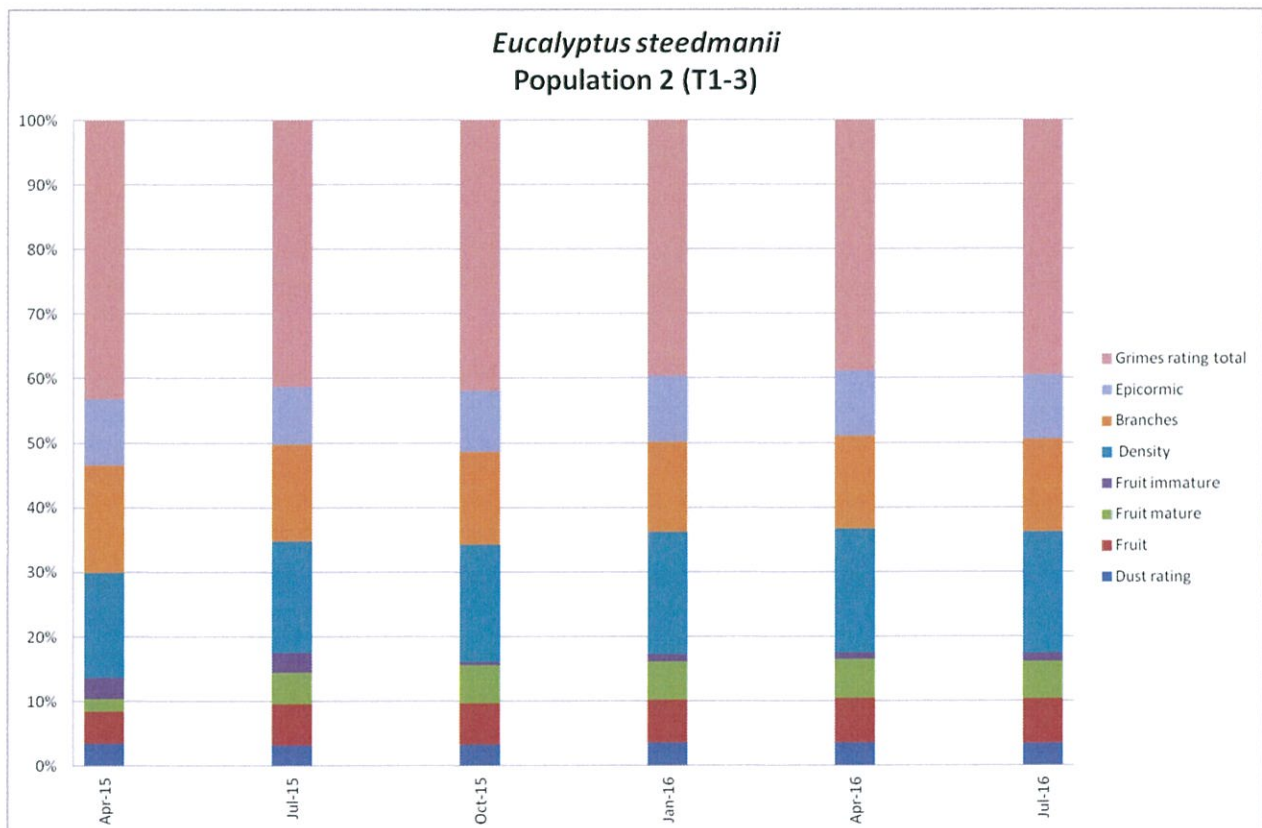


Figure 4: Population 1 Quarterly Health and Reproductive Maturity Graph

### **Population 3A/3B**

Population 3A and 3B is located immediately south of the Spotted Quoll open pit (~50m from the edge of the pit). Photo monitoring and transect monitoring is undertaken on a quarterly basis for this population. No decline in health or reproductivity was observed during the reporting period. Table 3 and Figure 3 illustrate the monitoring results over the period.

Table 3: Population 3 Average Quarterly Summary Results

Date	Apr-15	Jul-15	Oct-15	Jan-16	Apr-16	Jul-16
Dust rating	1.0	1.0	1.0	1.0	1.0	1.0
Fruit	1.3	1.7	1.8	1.8	1.8	1.9
Fruit mature	0.4	0.9	1.1	1.1	1.1	1.1
Fruit immature	1.0	0.8	0.7	0.7	0.8	0.8
Density	5.1	6.3	4.9	5.1	5.1	5.1
Branches	4.9	5.0	5.0	5.0	4.9	5.0
Epicormic	3.0	3.0	3.0	3.0	3.0	3.0
Grimes rating total	13.0	14.3	12.9	13.1	13.0	12.7

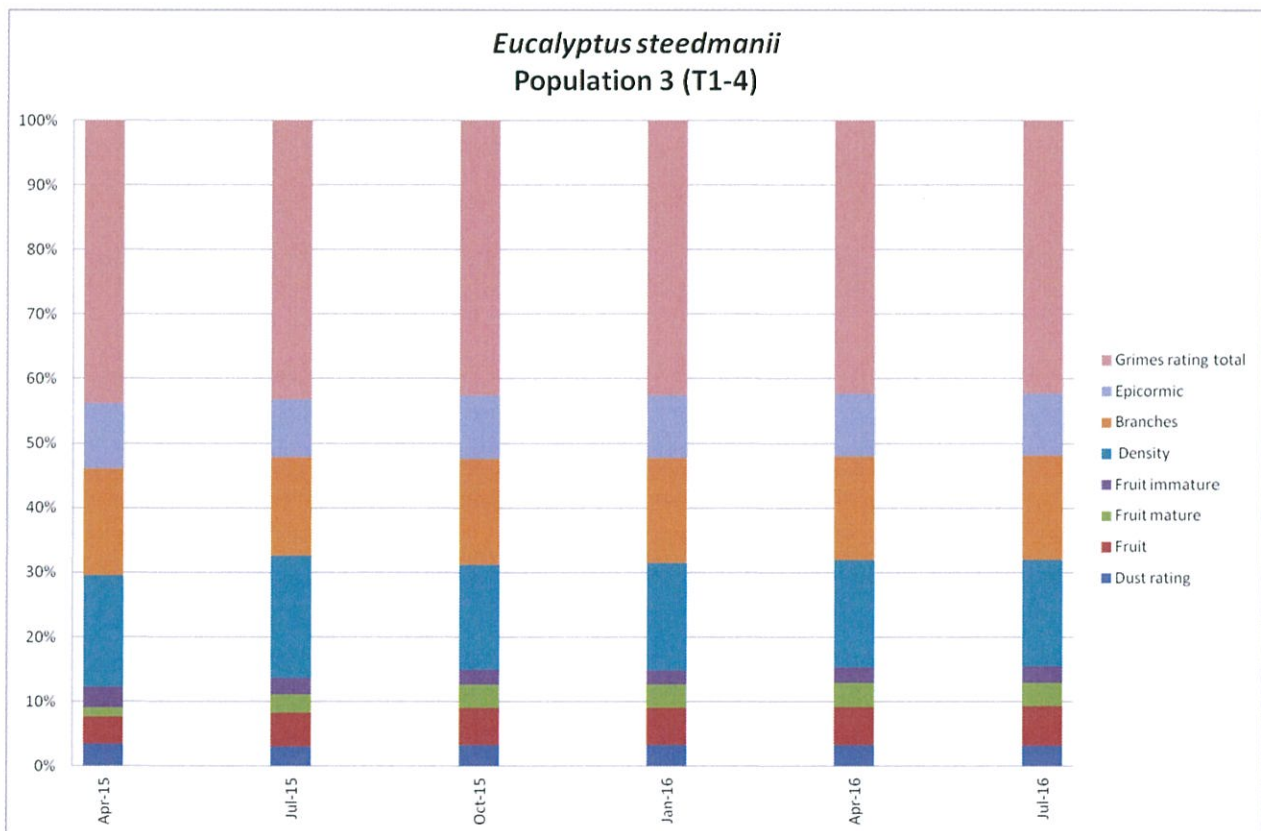


Figure 5: Population 3 Quarterly Health and Reproductive Maturity Graph

#### **Population 4**

Population 4 is located approximately 20km north of the Spotted Quoll area. This population is monitored on an annual basis. Since monitoring switched over to the new methodology, this population has only been monitoring once. Table 4 illustrates the monitoring results for the period.

Table 4: Population 4 Average Quarterly Summary Results

Date	Oct-15
Dust rating	1.0
Fruit	0.8
Fruit mature	0.3
Fruit immature	0.5
Density	4.7
Branches	4.9
Epicormic	3.0
Grimes rating total	5.5

### **Population 5**

Population 5 is located approximately 20km north of the Spotted Quoll area. This population is monitored on an annual basis. Since monitoring switched over to the new methodology, this population has only been monitoring once. Table 5 illustrates the monitoring results for the period.

Table 5: Population 5 Average Quarterly Summary Results

Date	Oct-15
Dust rating	1.0
Fruit	0.6
Fruit mature	0.3
Fruit immature	0.2
Density	5.0
Branches	5.0
Epicormic	3.0
Grimes rating total	7.3

### **Population 7**

Population 7 is located approximately 800m east of the Spotted Quoll mine. Quarterly transect monitoring is undertaken for this population. No decline in health or reproductivity was observed during the reporting period. Table 6 and Figure 4 illustrate the monitoring results over the period.



Table 6: Population 6 Average Quarterly Summary Results

Date	Apr-15	Jul-15	Oct-15	Jan-16	Apr-16	Jul-16
Dust rating	1.0	1.0	1.0	1.0	1.0	1.0
Fruit	0.9	1.2	1.0	1.0	1.1	1.1
Fruit mature	0.3	0.6	0.9	1.0	0.9	1.0
Fruit immature	0.7	0.6	0.1	0.1	0.1	0.1
Density	5.0	5.7	5.0	5.3	5.5	5.2
Branches	4.9	4.9	4.9	4.9	4.9	4.8
Epicormic	3.0	2.9	3.0	3.0	3.0	2.9
Grimes rating total	12.8	13.5	12.9	13.3	13.4	13.3

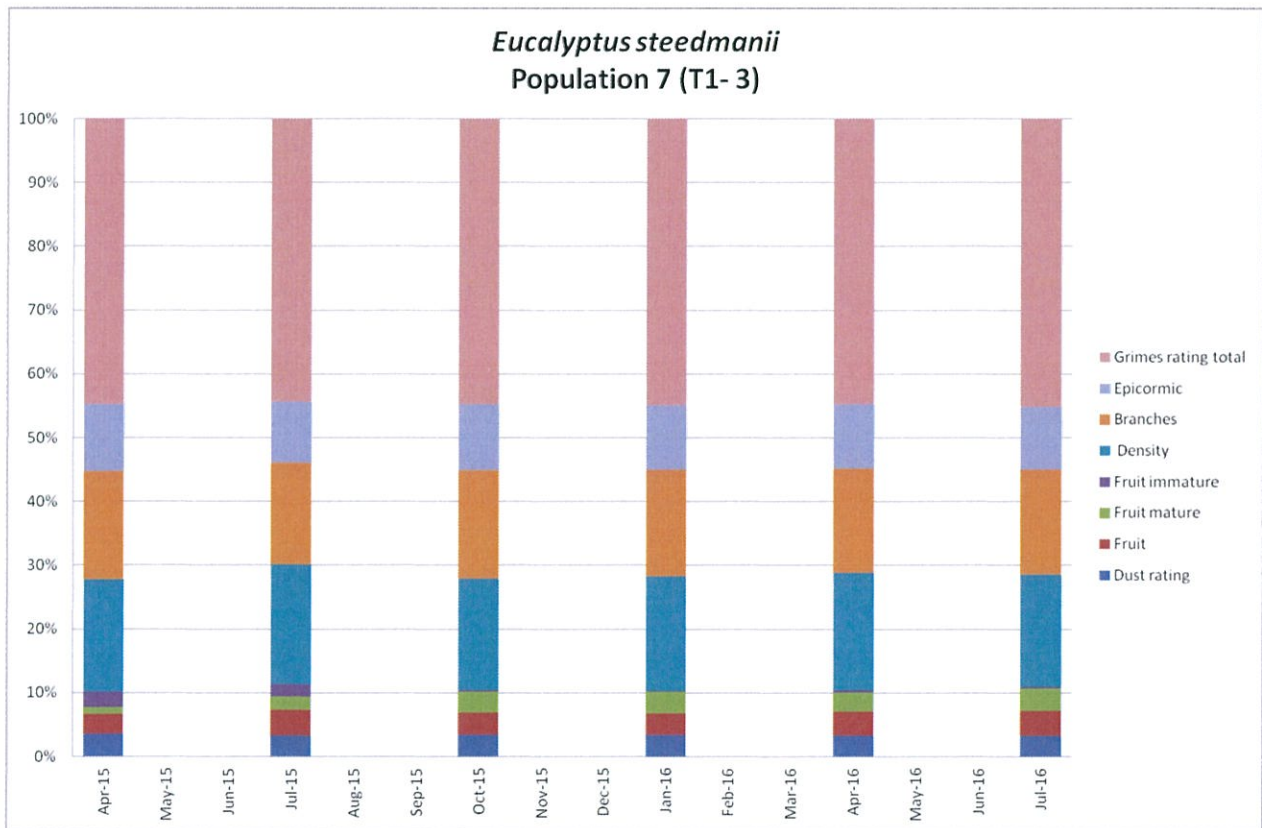


Figure 6: Population 7 Quarterly Health and Reproductive Maturity Graph